



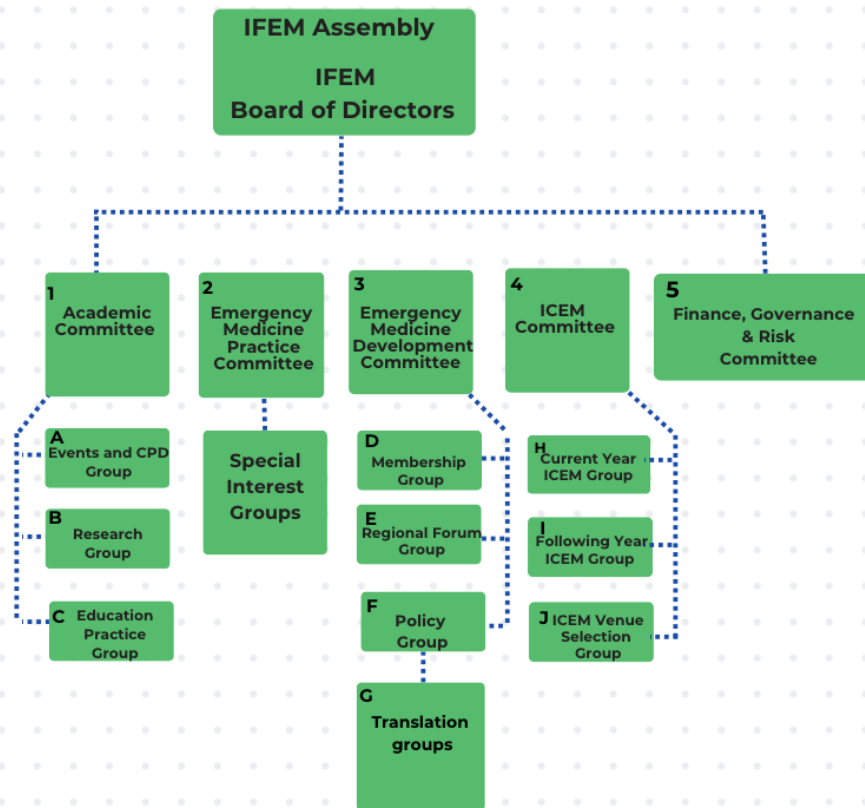
International Federation for Emergency Medicine

IFEM Restructure 2025

Main purpose of new Committees and Groups explained

There is a new organisational structure

IFEM's Committees have been reorganised into fewer committees, with new groups established under parent committees. Elections for Chair and member positions will occur between February and May 2025.



What each body does

The purpose of each committee or group is summarised below to inform and guide you. We hope that you will read this document and be inspired to participate in a committee or a group.

Applications will be made in two phases.

Phase 1 end February to end March:

➤ Committees

- Emergency Medicine Clinical Practice
- Emergency Medicine Specialty Development
- Academic
- ICEM

➤ Groups

- Membership
- Regional Forum
- Policy

Phase 2 end March to end April:

➤ Committees

- Finance, Governance and Risk

➤ Groups

- Events and CPD
- Research
- Education Practice

Please note that:

- Nominations will be considered by the Committee Chairs in consultation with the Nominations Committee. Membership will be selected with attention to the following criteria:
 - Diversity of country of medical practice and gender
 - Expertise relevant to the committee's work
- Appointments will be via a Board decision.
- You may also be aware of IFEM's Special Interest Groups (SIGs). These have not been restructured, although they all now sit under the same parent committee.
- Membership of a SIG does not require an election. If you would like to see the topics that our SIGs specialise in and would like to apply, please visit the IFEM website [HERE](#)
- **The main purpose of each committee or group is outlined below.**

Table of Contents

| | |
|---|---|
| 1. Academic Committee..... | 4 |
| A. Continuing Professional Development (CPD) and Events Group | 4 |
| B. Research Group | 4 |
| C. Education Practice Group | 4 |
| 2. Emergency Medicine Practice Committee..... | 5 |
| 3. Emergency Medicine Development Committee..... | 6 |
| D. Membership Group | 6 |
| E. Regional Forum Group | 6 |
| F. Policy Group | 6 |
| G. Translation Group..... | 6 |
| 4. International Conference on Emergency Medicine (ICEM) Committee..... | 7 |
| H. 20XX ICEM Liaison Group | 7 |
| I. ICEM Venue Selection Group..... | 7 |
| 5. Finance, Governance & Risk Committee | 8 |
| 6. Nominations and Awards Committee..... | 8 |

1. Academic Committee

PURPOSE

The Academic Committee is a standing committee of IFEM overseeing all aspects of training, education, and research within IFEM. It will delegate operational matters to its professional groups, which include the Events and CPD Group, Research Group and Education Practice Group. The committee's purpose is to:

- oversee IFEM's educational, research, and academic activities, ensuring alignment with IFEM's strategic direction and timely progress of academic activities
- manage the academic activities within the IFEM Board-approved budget and policy framework, including IFEM Educational Events (online, hybrid and in-person)
- ensure that IFEM's educational products align with member societies' needs

A. Continuing Professional Development (CPD) and Events Group

PURPOSE

The Continuing Professional Development and Events Group is responsible for high quality Continuing Professional Development output from IFEM's Academy; and to ensure appropriate use of the IFEM logo from third party providers or member societies of their courses, conferences etc. to signify IFEM's support of high-quality CPD.

It will also ensure that IFEM-provided educational events serve the needs of all its member organisations.

B. Research Group

PURPOSE

The IFEM Research Committee supports high-quality emergency medicine research globally. The committee's purpose aligns with IFEM's mission to improve emergency medical care worldwide through evidence-based practice and knowledge dissemination.

C. Education Practice Group

PURPOSE

The Education Practice Group develops and maintains a series of documents relating to curricula recommendations and implementation of educational developments in emergency medicine spanning undergraduate, graduate, and continuing medical education.

2. Emergency Medicine Practice Committee

PURPOSE

The Emergency Medicine Practice Committee is a standing committee of IFEM. It coordinates the work of the IFEM Special Interest Groups (SIGs) and ensures they align with the strategic goals of IFEM, including the production of resources such as white papers, resource documents, educational guidance, and standards of care.

It provides IFEM's member societies and the international emergency medicine community with resources and tools and a community of practice, to improve clinical practice through the work of the committee's Special Interest Groups. These include:

1. Behavioural Emergencies Special Interest Group (SIG)
2. Critical Care Special Interest Group (SIG)
3. Disaster Special Interest Group (SIG)
4. EM Resident Trainee Special Interest Group (SIG)
5. Gender-Specific Issues Special Interest Group (SIG)
6. Geriatric EM Special Interest Group (SIG)
7. Informatics Special Interest Group (SIG)
8. Paediatric EM Special Interest Group (SIG)
9. Public and Environmental Health Special Interest Group (SIG)
10. Quality and Safety Special Interest Group (SIG)
11. Technology Special Interest Group (SIG)
12. Trauma Special Interest Group (SIG)
13. Ultrasound Special Interest Group (SIG)

3. Emergency Medicine Development Committee

PURPOSE

The Emergency Medicine Development Committee (ECDC) is a standing committee of IFEM supporting IFEM's broad goals of "*promoting access to and leading the development of the highest quality of emergency medical care for all people*".

It will delegate operational matters to its constituent groups: the Membership Group, the Regional Forum Group and Policy Development Group.

The Committee will advocate for and support countries in which emergency medicine is developing, towards goals which may include:

- developing a national society
- achieving specialty status at national level
- promoting sustainability and growth of emergency medicine as a specialty and as a career

D. Membership Group

PURPOSE

The Group sits within the Emergency Care Development Committee to act as a liaison forum to advise the President, Board, Committees and Assembly members on membership-related issues.

E. Regional Forum Group

PURPOSE

The Regional Forum Group supports strong inclusion and communication, both into and out from IFEM, strengthening collaboration and sharing best practice between regions and regional societies. Its work focuses on strong links with member regional societies for developing Emergency Medicine as a specialty.

F. Policy Group

PURPOSE

The Policy Group exists to ensure harmony of IFEM's policies with each other and with the strategic direction of the organisation. It will be both proactive and reactive to new situations such as creating policy statements, developing IFEM's equity and diversity and inclusion strategies.

G. Translation Group

PURPOSE

The IFEM Translation Groups is established to provide multilingual support for IFEM's resources, publications, and communications. The group will ensure that IFEM's work is accessible to an international audience, advancing IFEM's mission of improving emergency medical care worldwide. Good use of translation software will facilitate the Group's work.

4. International Conference on Emergency Medicine (ICEM) Committee

PURPOSE

The ICEM Committee is a standing committee of IFEM. Its purpose is to oversee and advise upon IFEM's strategy for the future of IFEM's flagship ICEM annual conference. Its work will be supported and executed by the ICEM Liaison Groups responsible for each conference. It is responsible for convening a Venue Selection Group for each year of applications and returning a summary and recommendation to the Board.

H. 20XX ICEM Liaison Group

PURPOSE

The ICEM Liaison Group aims to provide detailed two-way dialogue from IFEM leadership to the Local Organizing Committee (LOC), to prepare for each ICEM conference.

The ICEM Liaison Group will dissolve as recommended by the ICEM Committee but typically after submission of the ICEM report by the LOC on completion of the applicable ICEM.

I. ICEM Venue Selection Group

PURPOSE

The Venue Selection Group is established to consider applications to host the ICEM and make a justified proposal to the Board.

5. Finance, Governance & Risk Committee

PURPOSE

The Finance, Governance and Risk Committee exists as an interim standing committee of IFEM which will exist until a new Board of Directors is fully established and oriented, after June 2026. It was formed during 2025 as a merger of the Finance Committee and Governance Committees. Its role is to:

- Assist the Board in ensuring that appropriate organisational reporting, risk management, accounting and internal controls including audit, are in place
- Monitor and advise compliance by the organisation, regarding its Constitution, Regulations and Finance Manual, reporting to the Board regularly

6. Nominations and Awards Committee

PURPOSE

The Nominations and Awards committees of the IFEM supports the Board in choosing the successful candidates for the IFEM awards and for appointing people to IFEM leadership positions.